

Public Document Pack



MEETING:	Health and Wellbeing Board
DATE:	Thursday, 4 February 2021
TIME:	2.00 pm
VENUE:	Held Virtually

SUPPLEMENTARY AGENDA

- 8 Tackling Excess Winter Deaths and cold related illnesses - Jen Macphail and Julie Tolhurst (HWB.04.02.2021/8) *(Pages 3 - 12)*

To: Chair and Members of Health and Wellbeing Board

Please contact Peter Mirfin on or email governance@barnsley.gov.uk

This page is intentionally left blank

Tackling Excess Winter Deaths and cold related illnesses in Barnsley 2018-2021

Health and Wellbeing Board 4th February 2021



Recommendations

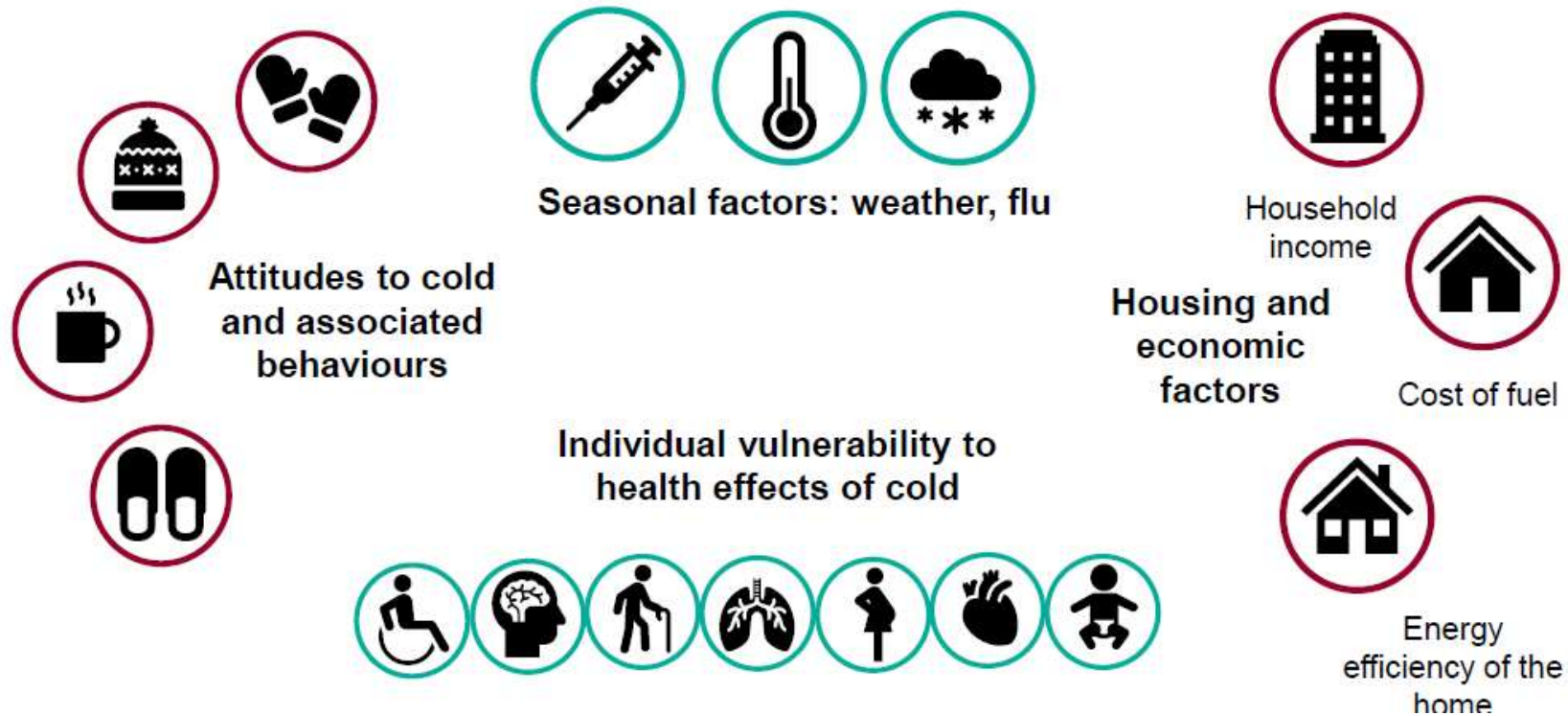
Health and Wellbeing Board members are asked to:-

- Note review of 2018-2021 plan and recognise the work done to date to address excess winter deaths in Barnsley
- Raise awareness of current guidance and support locally to address EWD this winter and beyond
- Support a review of the plan going forward in to 2021, taking account of evidence from COVID-19 pandemic and the zero-carbon commitment

Who is affected by cold?

Excess Winter Deaths (EWDs) represent an important health inequality – people who experience greater socio-economic deprivation are more likely to be affected.

Multi-agency action is required to address wider determinants of health that impact on risk from cold such as socio-economic inequalities, fuel poverty and housing energy efficiency.



How COVID-19 can amplify cold weather-related health risks

The potential interactions between **cold weather** and **COVID-19** include:



shared risk factors

amongst population sub-groups affected by both cold temperatures and COVID-19



clinical impacts arising due to concurrence of cold weather and COVID-19



social isolation and reduced access to support networks and resources



increased exposure to cold temperatures due to changes in patterns of energy use at home, fuel poverty and reduced access to warm public spaces

system level risks related to concurrency of impacts, change in patterns of health and social care use, access and delivery and health seeking behaviour



Barnsley statistics

- Barnsley's 2018-2019 excess winter deaths rate (17.7%) is not significantly different to the England rate of 15.1%. When compared to nearest neighbours, Barnsley's rate is the joint 6th highest.
- The most recent rate of 17.7% is less than half what it was in the previous two time points (2016-2017 and 2017-2018).
- During 2012–2019, there were 75.5% more deaths from influenza and pneumonia in winter months than in non-winter months.
- Large geographical differences exist within Barnsley. During the period 2012–2019, rates of excess winter deaths ranged from 8.5% in Old Town ward to 53.9% in Darton East ward.



Stakeholder survey

- Undertaken in December 2020/ Jan 2021
- Aimed to:
 - review the actions taken 2018 to date, across all relevant sectors of the borough to tackle cold weather-related harm and Excess Winter Deaths (EWD).
 - Map the support currently available
 - Providing a steer on the focus of the next plan in 2021.
- Some progress has been made against each of the priorities set out in the 2018-21 plan



Highlights from 2018-21

- Warm homes single point of access delivered
- Better Homes Barnsley energy efficiency improvements to private sector housing
- Safe and Well checks in partnership with SYFR
- Falls Prevention booklets delivered to key vulnerable groups
- Above average for flu vaccination uptake in Barnsley



Current support available

- Winter Health Campaign- Co-ordinated digital and traditional marketing campaign with BMBC and CCG - <https://www.barnsley.gov.uk/ready-for-winter/>
- Warm Homes and Hospital Discharge & energy efficiency improvements- [BMBC Warm homes](#)
- Falls Prevention website -[BMBC Falls Prevention webpage](#)
- Flu vaccination – [Flu vaccine - NHS](#)



Review of 2018- 2021 plan

- Summer 2021 full review building on the survey with stakeholders and communities at risk
- Financial and resource implications
- Review of membership and governance arrangements
- Where does the plan sit strategically?

(Health and Wellbeing Strategy, Zero Carbon COVID-19, poverty review)



This page is intentionally left blank